



Republic of the Philippines
Department of Education

REGION I
SCHOOLS DIVISION OF THE CITY OF BATAC

Advisory No. **125**s. 2026
15 JUN 2026

In compliance with DepEd Order (DO) No. 8, s. 2013
this advisory is issued not for endorsement per DO 28, s. 2001,
but only for the information of DepEd officials,
personnel/staff, as well as the concerned public.
(Visit www.deped.gov.ph)

**SPACECON: A MOBILE SPACE SCIENCE AND STEM ENRICHMENT
PROGRAM FOR SCHOOL YEAR 2026-2027**

The ANTARES STEM Incorporated is launching a Mobile Space Science and STEM Enrichment Program for the School Year 2026-2027.

The activity aims to bring engaging, inquiry-based science experiences and increase learner engagement in science, support teachers through innovative enrichment approaches and help schools cultivate a stronger STEM culture.

Relative to this, all public and private elementary and secondary schools of the Schools Division of the City of Batac are encouraged to participate in the activity on a voluntary basis.

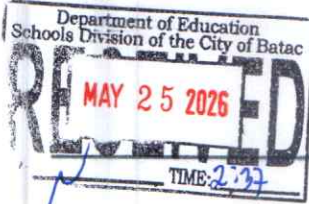
All precautionary and safety measures must be strictly observed and implemented during participation to the activity to ensure the protection and safety of all students and teachers. Likewise, the activity should be guided by DepEd guidelines and guidelines for the off-campus activity and DepEd Order No. 9, s. 2005 titled "Instituting Measures to Increased Engaged Time-on-Task and Ensuring Compliance Therewith.

For further details and queries, please see Advisory No. 81, s. 2026 herein attached.

For information.


CID-GBL/SPACECON
2607442/26039/June 11, 2026

SDCB RECORDS UNIT
2607442



Republic of the Philippines
Department of Education
REGION I

MAY 25 2026

Advisory No. 81, s. 2026

MAY 25 2026

In compliance with DepEd Order (D.O) No. 8, s. 2013
but only for the information of DepEd Officials,
personnel/staff, as well as the concerned public.
(Visit www.deped.gov.ph)

**SPACECON: A MOBILE SPACE SCIENCE AND STEM ENRICHMENT PROGRAM
FOR SCHOOL YEAR 2026-2027**

In reference to Advisory No. 047, s. 2026 dated February 26, 2026, the ANTARES STEM Incorporated is launching a Mobile Space Science and STEM Enrichment Program for the school year 2026-2027.

The SpaceCon is designed to bring engaging, inquiry-based science experiences and aims to increase learner engagement in science, support teachers through innovative enrichment approaches, and help schools cultivate a stronger STEM culture. Activities are designed to compliment classroom instruction, reinforcing key learning competencies through hands-on exploration, play-based engagement, and real-world applications.

Participation of learners, teachers, and/or educators from both public and private schools is purely **VOLUNTARY** and will not hamper instructional time in compliance with the provisions of DepEd Order No. 12, s. 2025, titled Multi-Year Implementing Guidelines on the School Calendar and Activities and DepEd Order No. 9, s. 2005, entitled Instituting Measures to Increase Engaged Time-On-Task and Ensuring Compliance Therewith and the policy on off-campus activities stated in DepEd Order 66, s. 2017.

This is also subject to the no-collection policy as stated in Section 3 of RA 5546, also known as An Act Prohibiting the Sale of Tickets and/or the Collection of Contributions for Whatever Project or Purpose from Students and Teachers of Public and Private Schools, Colleges and Universities (Ganzon Law), issued in DepEd Order 19, s. 2008, and reiterated in DepEd Memorandum No. 041, s. 2024.

For more information, please contact:

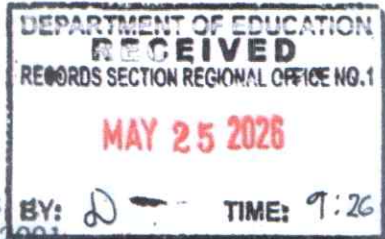
Ms. Lovella Naelga
Chief Operations Lead, ANTARES STEM Inc.
Mobile Phone Number : 0917-320-8323
Email Address : connect@antares-stem.com
Website : www.antares-stem.com
Facebook : facebook.com/spaceconbyantares

CLMD/jce/Antares_SpaceCon
May 24, 2026

26039



CLMD260589



Advisory No. **047**, s. 2026
February 26, 2026

In compliance with DepEd Order (DO) No. 8, s. 2013
this advisory is issued not for endorsement per DO 28, s. 2001,
but only for the information of DepEd officials,
personnel/staff, as well as the concerned public.
(Visit www.deped.gov.ph)

**SPACECON: A MOBILE SPACE SCIENCE AND STEM ENRICHMENT PROGRAM
FOR SCHOOL YEAR 2026-2027**

ANTARES STEM Incorporated, a social enterprise dedicated to strengthening science education through mobile exhibits, hands-on programs, and science communication initiatives, will launch SpaceCon: A Mobile Space Science and STEM Enrichment Program for the school year 2026-2027.

SpaceCon is designed to bring engaging, inquiry-based science experiences and aims to increase learner engagement in science, support teachers through innovative enrichment approaches, and help schools cultivate a stronger STEM culture. Activities are designed to complement classroom instruction, reinforcing key learning competencies through hands-on exploration, play-based engagement, and real-world applications.

The activity is a one-day, on-site program featuring rotational thematic zones, including a mobile planetarium and space science exhibits, creative and play-based science activities, electricity and magnetism demonstrations, and introductory artificial intelligence (AI) and robotics showcases.

Kindergarten to Grade 12 learners in both public and private schools nationwide are invited to participate in this event.

Participation of learners and teachers from public and private schools shall be purely voluntary and will not hamper instructional time in compliance with the provisions of DepEd Order (DO) No. 012, s. 2025, titled Multi-Year Implementing Guidelines on the School Calendar and Activities and DO 9, s. 2005 titled Instituting Measures to Increase Engaged Time-on-Task and Ensuring Compliance Therewith and the policy on off-campus activities stated in DO 66, s. 2017.

This is also subject to the no-collection policy as stated in Section 3 of Republic Act No. 5546 also known as An Act Prohibiting the Sale of Tickets and/or the Collection of Contributions for Whatever Project or Purpose from Students and Teachers of Public and Private Schools, Colleges and Universities (Ganzon Law), issued in DO 19, s. 2008, and reiterated in DepEd Memorandum No. 041, s. 2024.

For more information, please contact:

Ms. Lovella Naelga
Chief Operations Lead
ANTARES STEM Incorporated
Mobile Number: 0917-320-8323
Email Address: connect@antares-stem.com
Website: www.antares-stem.com
Facebook: facebook.com/spaceconbyantares

May 22, 2026

Regional Director Estela P. Leon-Cariño
Department of Education – Region I

**Introduction of SpaceCon (SpaceConnections) and
Request for Regional Advisory for SY 2026–2027**

Dear **Regional Director Leon-Cariño**,

Warm greetings.

We respectfully introduce **ANTARES STEM Incorporated**, a STEM social enterprise supporting science education through mobile, hands-on learning programs designed to complement existing curricula.

We are pleased to present **SpaceCon (SpaceConnections)**, a mobile STEM enrichment program that brings interactive, inquiry-based science experiences directly to schools. The program is implemented as a one-day, on-site learning experience featuring a mobile planetarium and rotating activity zones covering astronomy, Earth science, physics, chemistry, biology, and introductory AI and robotics.

SpaceCon aims to enhance learner engagement in science and reinforce key competencies through experiential learning. The program is adaptable for **Kinder to Grade 12 learners** and delivered by trained facilitators.

Implementation Overview:

- Duration: 2.5–3 hours per batch
- Rollout: School Year 2026–2027
- Mode: On-campus; flexible scheduling
- Participation: Voluntary, with parental consent
- Program Access: Minimal fee coordinated with schools, in line with DepEd guidelines

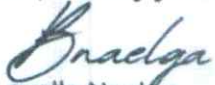
In this regard, we respectfully request your good office to issue a **Regional Advisory** to support coordination with **Schools Division Offices and public schools within Region I** for possible participation in **School Year 2026–2027**. While private schools may coordinate independently, an advisory from your office would greatly help expand access to this supplemental STEM learning opportunity in accordance with DepEd policies and procedures.

For your reference, we have attached the **SpaceCon Concept Paper** and **DepEd Advisory No. 047, s. 2026**. Should your office require further details or a short presentation, we would be honored to coordinate at your convenience.

We share your commitment to advancing quality science education for every Filipino learner and look forward to the possibility of working with **DepEd Region I** in bringing meaningful STEM experiences to schools across the region.

Thank you very much for your time and consideration.

Respectfully yours,



Lovella Naelga

Chief Operations Lead

ANTARES STEM Incorporated

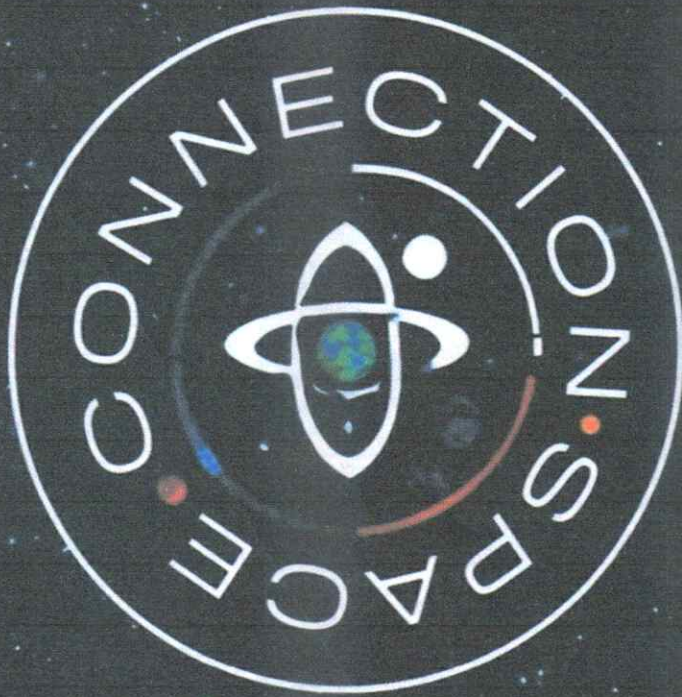
Parkway Corporate Center, Filinvest City,

Alabang, Muntinlupa 1781, Philippines

connect@antares-stem.com | +63917.320.8323 | +63 898 200 STEM (7836)

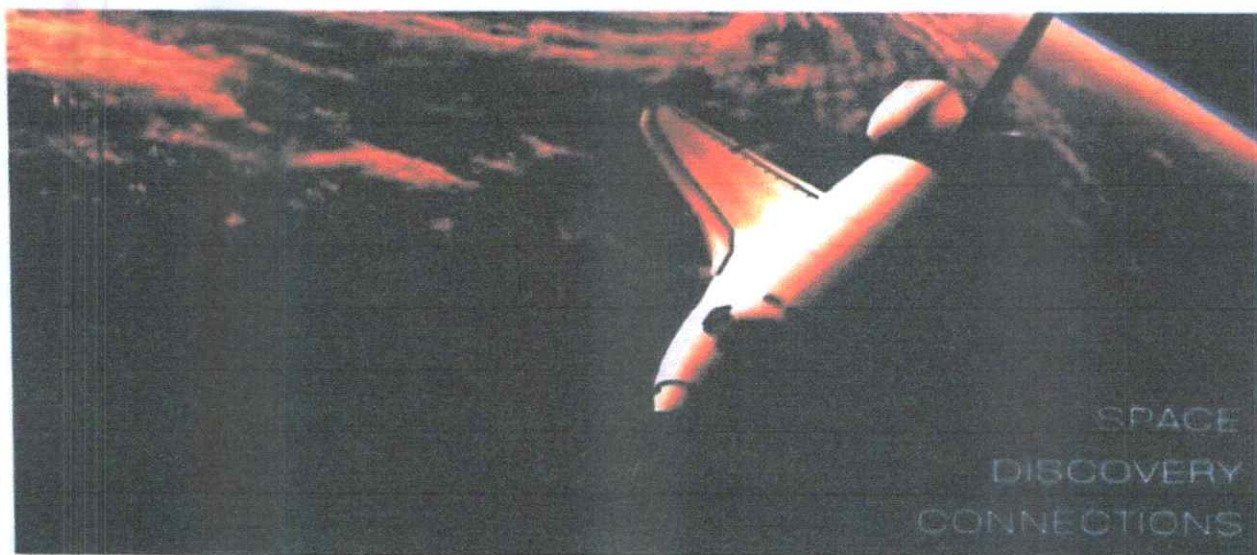
CONCEPT PAPER

A Mobile Science Experience



presents

ANTARES
STEM INCORPORATED



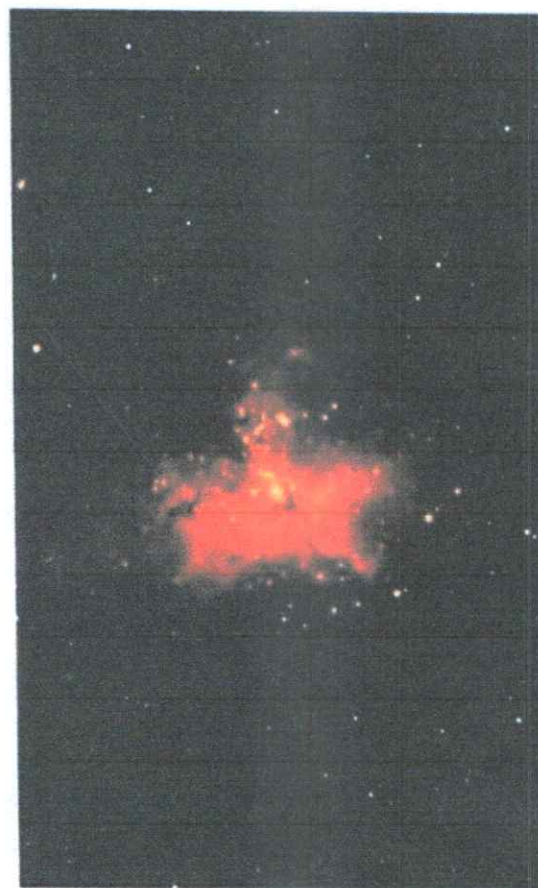
SpaceCon

**A Mobile Space Science and STEM Enrichment Program
by ANTARES STEM Incorporated**

I. Overview

SpaceCon is a mobile, modular space science experience developed by **ANTARES STEM Incorporated** to bring high-quality, engaging STEM learning directly to schools across the Philippines. Designed as a **curriculum-complementing enrichment program**, **SpaceCon** reinforces classroom learning under the **DepEd MATATAG Curriculum through hands-on, inquiry-based, and play-centered activities**.

SpaceCon brings interactive science experiences directly to schools, allowing learners to explore space science and related disciplines in a structured, safe, and age-appropriate manner. It highlights the **interconnectedness of scientific fields**, including astronomy, earth science, physics, chemistry, biology, engineering, artificial intelligence, and robotics, and demonstrates how these disciplines work together in real-world applications.



This image of M16 (Eagle Nebula) taken from Bulacan by the SpaceCon Team

This initiative supports DepEd's goals of strengthening foundational skills, promoting scientific literacy, and increasing learner engagement through contextualized and meaningful learning experiences.

II. Program Rationale

Science education is most effective when learners are given opportunities to observe, investigate, and apply concepts beyond the textbook. SpaceCon addresses this need by providing an on-site enrichment experience that:

- Reinforces classroom lessons through hands-on activities
- Encourages curiosity and inquiry in science and technology
- Makes abstract space science concepts accessible and engaging
- Supports equitable access to quality STEM learning opportunities

SpaceCon is not intended to replace classroom instruction but to enhance and reinforce existing learning under the MATATAG Curriculum.

III. Objectives

The SpaceCon program aims to:

- Complement MATATAG Curriculum science competencies through experiential learning
- Increase learner interest and engagement in science and technology
- Promote interdisciplinary understanding of STEM concepts
- Develop observation, problem-solving, creativity, and collaboration skills
- Introduce learners to contemporary applications of science and technology

IV. Target Participants

- Kindergarten to Grade 12 learners
- Science teachers and school administrators
- Schools seeking curriculum-aligned STEM enrichment programs

Activities are adapted to be developmentally appropriate for each grade level.



VI. Implementation Strategy

Participation in SpaceCon involves a **minimal program access fee** to help support logistics, materials, transport, and facilitation requirements. Details are coordinated directly with participating schools in accordance with DepEd guidelines.

- Duration: One school day (flexible scheduling)
- Format: Rotational learning zones
- Facilitators: Trained science educators and facilitators
- Venue: School classrooms, halls, and designated open spaces

To support effective implementation, a **Post-Booking Preparation Checklist** is provided to schools, covering:

- Space and venue requirements
- Safety and risk management guidelines
- Sample program flow
- Coordination with teachers and school administrators

VII. Expected Outcomes

Through participation in SpaceCon, schools may expect:

- Increased learner engagement in science classes
- Improved understanding of key science concepts
- Greater appreciation of science and technology in daily life
- Enhanced support for teachers through enrichment activities

VIII. Sustainability and Continuing Engagement

SpaceCon is designed as an entry point to continuing science engagement. Participating schools may opt to take part in follow-up activities such as:

- School-based astronomy or science clubs
- Online science talks and webinars
- Learner workshops aligned with national science events

These follow-through activities help sustain interest and learning beyond the on-site program.



IX. Conclusion

SpaceCon is a curriculum-aligned, learner-centered STEM enrichment initiative that supports DepEd's efforts to strengthen science education. By bringing interactive space science experiences directly to schools, SpaceCon helps foster curiosity, scientific thinking, and meaningful learning while respecting the role of formal classroom instruction.

The program is respectfully submitted for consideration for the issuance of a DepEd Advisory to inform and guide interested schools on participation.

Let's Bring the Universe to our Learners!

For any other information, please don't hesitate to contact us at:

***Accessible Nexus of Teaching, Astronomy, Robotics, Earth and Space -
Science, Technology, Engineering, and Mathematics***



ANTARES STEM Incorporated

☎ +63917.320.8323 | +63905.604.6120 |
+63898.200.7836(STEM)

📘 facebook.com/spaceconbyantares

✉ connect@antares-stem.com

📍 Unit 1015, Parkway Corporate Center, Filinvest
City Alabang, City of Muntinlupa, Fourth District,
NCR, PH